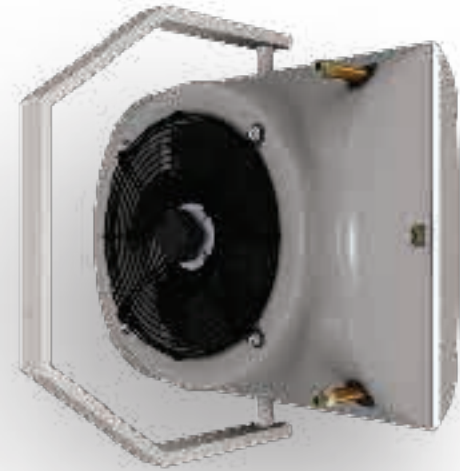




Heating capacity	10–53 kW
Air flow	800–4200 m ³ /h
Weight	20,2–23,6 kg
Color	grey
Casing	ABS antistatic
Finishing	anodized aluminium



CASING

It is made of ABS – antistatic plastic. Due to the modern look, the heaters are fit for buildings of highest aesthetic demands. Use of plastic results in substantial weight reduction. The casing does not transfer any mechanical loads.

AIR BLADES

Stepless regulation of the air outlet angle of delivered air. They are made of anodized aluminium form an aesthetic finish of the device.

FAN

Special shape of blades for quiet operation. Optional stepless fan capacity regulation by the special control system (LEO FL type M). Blades made of plastic to reduce the device weight.

ROTARY 3D-CONSOLE

The heater can be mounted parallel to the wall or at an angle of 45°. It is possible to rotate it around connection points.

AIR NOZZLE

Thanks to its design the nozzle distributes the delivered air onto the whole surface of the exchanger. It considerably reduces the noise level.

LEO FL 30					LEO FL 50				
V = 4 200 m ³ /h					V = 3 700 m ³ /h				
Tp1	PT	Qw	Δpw	Tp2	PT	Qw	Δpw	Tp2	
°C	kW	l/h	kPa	°C	kW	l/h	kPa	°C	
Tw1/Tw2 = 90/70°C									
0	29,6	1270	12,2	18,9	52,7	2330	15,2	39,5	
5	26,8	1126	10,6	22,8	48,7	2150	13,3	42,1	
10	24,3	1080	9,1	26,6	44,7	1980	11,4	44,7	
15	22,1	990	7,8	30,4	40,8	1810	9,7	47,3	
20	20,0	890	6,6	34,2	37	1640	8,2	49,7	
Tw1/Tw2 = 80/60°C									
0	24,4	1080	9,6	16,1	45,3	2000	12,0	33,9	
5	22,3	990	8,1	20,0	41,2	1820	10,2	36,5	
10	20,1	890	6,8	23,8	37,4	1650	8,6	39	
15	18,0	800	5,6	27,6	33,6	1480	7,2	41,5	
20	16	710	4,6	31,3	29,8	1320	5,8	44	
Tw1/Tw2 = 70/50°C									
0	20,2	890	7,1	13,3	37,7	1660	9,0	28,3	
5	18,1	800	5,8	17,2	33,8	1490	7,5	30,8	
10	16	710	4,7	20,9	30	1320	6,1	33,3	
15	13,9	620	3,7	24,7	26,3	1160	4,8	35,8	
20	11,9	530	2,9	28,5	22,6	1000	3,7	38,2	



Power supply	230 V/50 Hz
Max power consumption	280 W
Max current consumption	1,2 A
IP/Insulation class	54/F
Acoustic pressure level	50 dB(A)

Acoustic pressure level measured in the room of average sound absorption, capacity 1500m³, at distance of 5m from the unit.



Max. water temperature	95°C
Max. water pressure	1,6 MPa (16 bar)

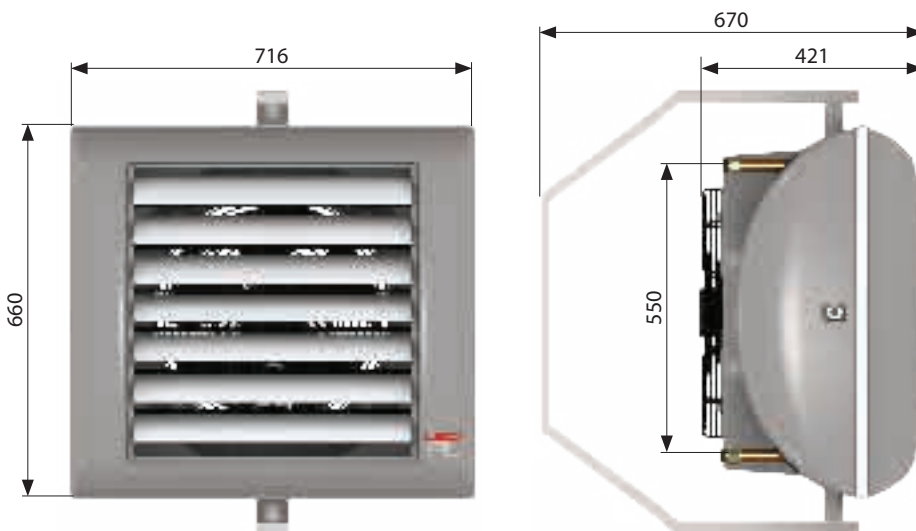
Technical data concerning supplying with other water parameters are available upon request at Sales office.

- V – air flow
- PT – heating capacity
- Tp1 – inlet air temperature
- Tp2 – outlet air temperature
- Tw1 – inlet water temperature
- Tw2 – outlet water temperature
- Qw – heating water stream
- Δpw – water pressure drop



Weight [kg]	FL 30	FL 50
Unit	20,2	22
Unit filled with water	21,2	23,6
Air stream range [m]	FL 30	FL 50
L*	26	24

* range of isothermal horizontal stream, limit speed 0,5 m/s



Connecting stub 3/4"

