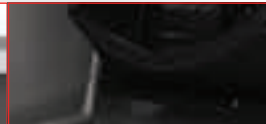
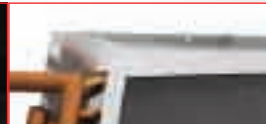
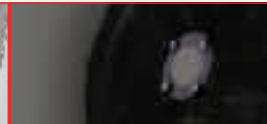
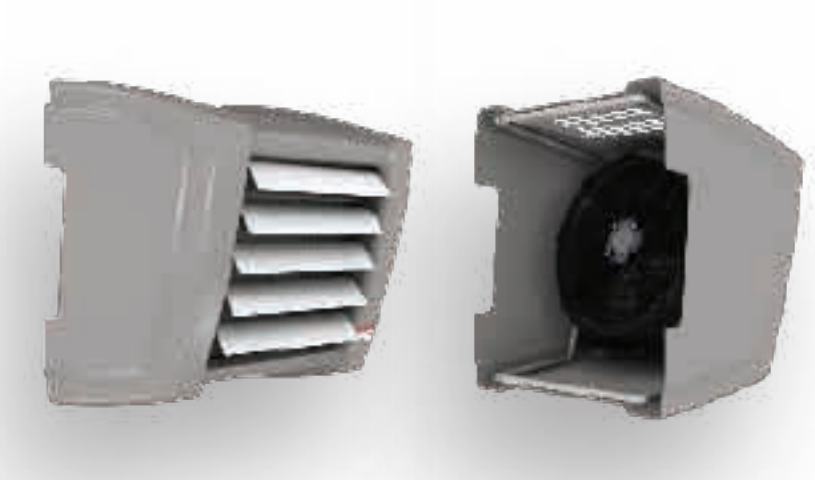


Heating capacity	5–19 kW
Air flow	230–1750 m ³ /h
Weight	13,8–15 kg
Color	grey
Casing	ABS antistatic



CASING

It is made of ABS – antistatic plastic. Inclined by 15° towards the room directs the heated air directly onto the occupied area. **It covers completely the heating and electrical installation.**

AIR BLADES

For stepless regulation of the air outlet angle. Made of anodized aluminium to form an aesthetic finish for the unit.

EC FAN

Low electrical power consumption - only 57,5W in M type with EC (Electronically Commutated) motor.

HEAT EXCHANGER

19 kW power adjusted for small and medium area. Connecting pipes ½” come out to the back of the device to make hiding the heating installation beneath the casing possible.

AIR NOZZLE

Directs the blown air onto the whole surface of the exchanger. Its specially designed profile made of plastic reduces noise generated during air flow.

LEO FS				
V = 1 750 m ³ /h				
Tp1	PT	Qw	Δpw	Tp2
°C	kW	l/h	kPa	°C
Tw1/Tw2 = 90/70°C				
0	19,4	873	5,9	31,3
5	18,3	806	5,1	34,4
10	16,8	741	4,4	37,5
15	15,3	676	3,7	40,5
20	13,9	613	3,1	43,5
Tw1/Tw2 = 80/60°C				
0	16,9	741	4,5	26,7
5	15,4	676	3,8	29,7
10	13,9	611	3,2	32,8
15	12,5	548	2,6	35,7
20	11,0	485	2,1	38,7
Tw1/Tw2 = 70/50°C				
0	13,9	608	3,2	22,0
5	12,4	544	2,6	25,0
10	11,0	480	2,1	28,0
15	9,5	417	1,6	30,9
20	8,1	355	1,2	33,7



	LEO FS S	LEO FS M
Power supply	230 V/50 Hz	
Max. power consumption	92 W	57,5 W
Max. current consumption	0,4 A	0,25 A
IP/Insulation class	54/F	
Acoustic pressure level	45 dB(A)	

Acoustic pressure level measured in the room of average sound absorption, capacity 1500m³, at distance of 5m from the unit.



Max. water temperature	95°C
Max. water pressure	1,6 MPa

Technical data concerning supplying with other water parameters are available upon request at Sales office.

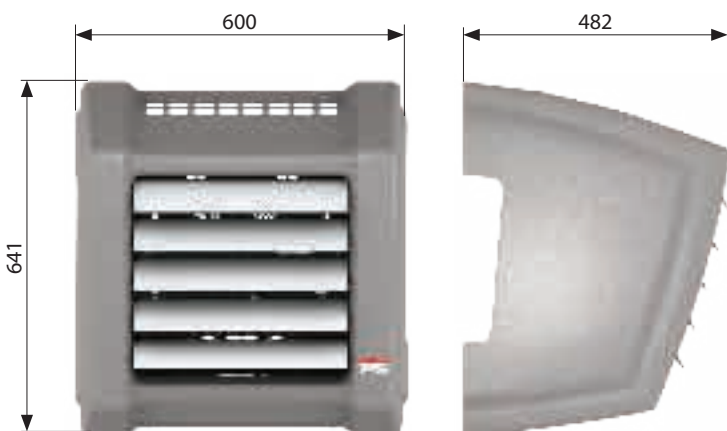
- V – air flow
- PT – heating capacity
- Tp1 – inlet air temperature
- Tp2 – outlet air temperature

- Tw1 – inlet water temperature
- Tw2 – outlet water temperature
- Qw – heating water stream
- Δpw – water pressure drop

LEO FS

Weight [kg]	LEO FS S / LEO FS M
Unit	13,8
Unit filled with water	15
Air stream range [m]	LEO FS S / LEO FS M
L*	12

* range of isothermal horizontal stream, limit speed 0,5 m/s



Connecting stub 1/2"

